



Project by



SHRI SALASAR DEVELOPERS

RESIDENTIAL APARTMENT

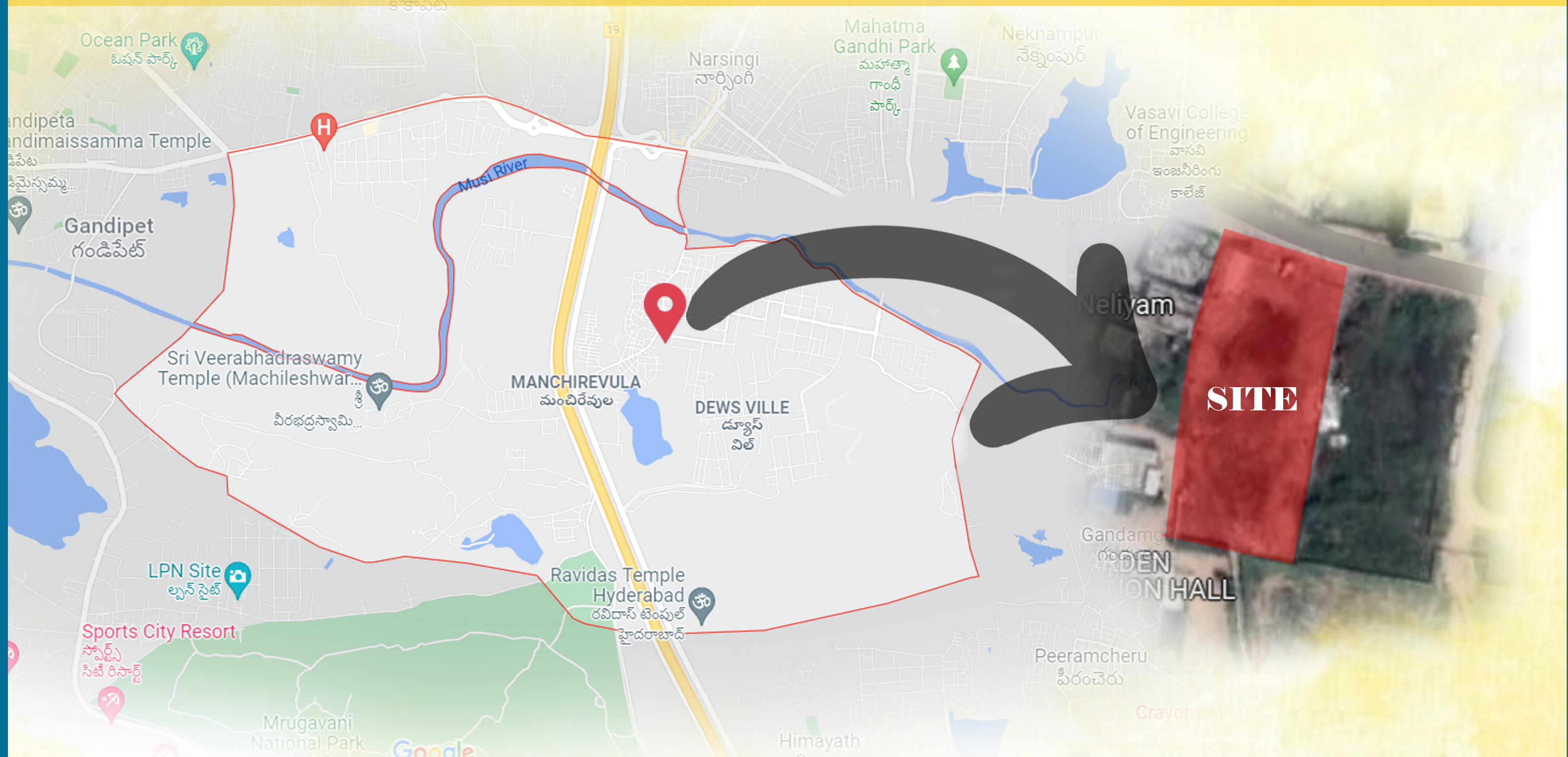
@

NARSINGI

Love Where You Live



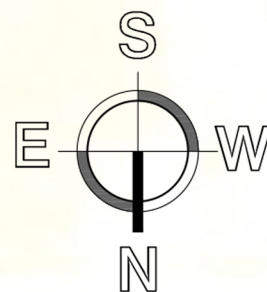
SITE LOCATION



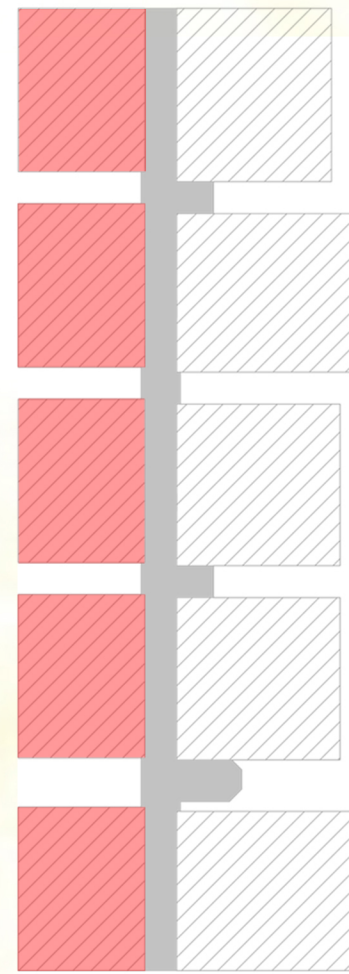
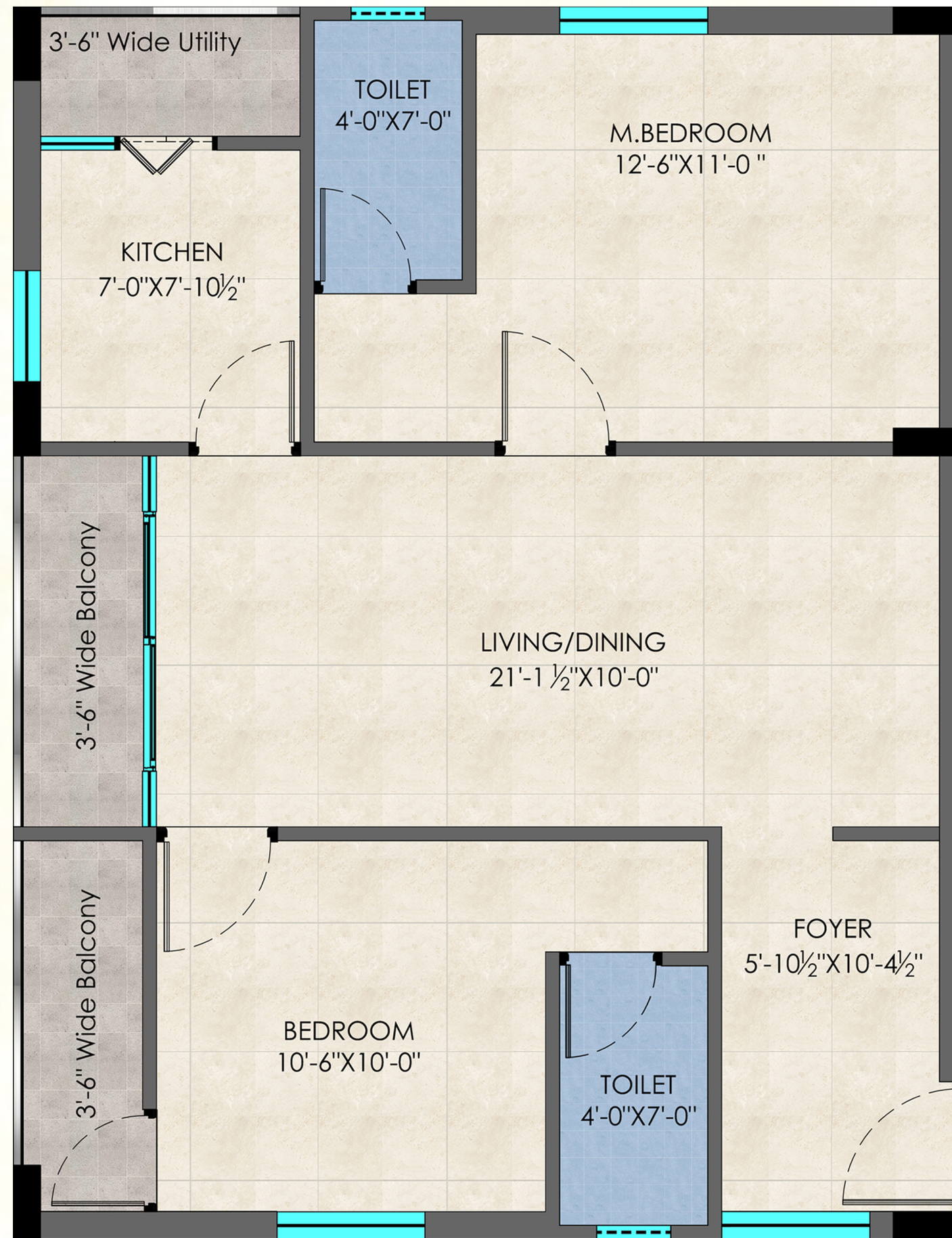
ACCURATE WIND CHIMES - 2.0 KM
TARAMATI - 3.7 KM
ORR TOLL GATE - 4.0 KM
FINANCIAL DISTRICT - 6.0 KM
HITECH CITY - 10.0 KM

TSPA - 3.0 KM
KOKAPET - 4.0 KM
GOLKONDA - 6.8 KM
GACHIBOWLI - 10 KM
AIRPORT - 22 KM

SITE PLAN

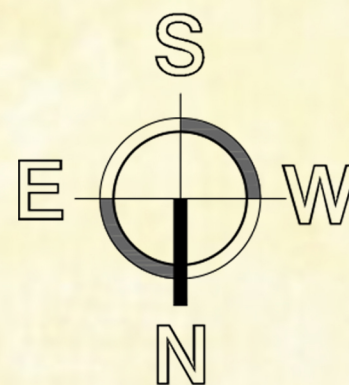


TYPICAL FLOOR PLAN

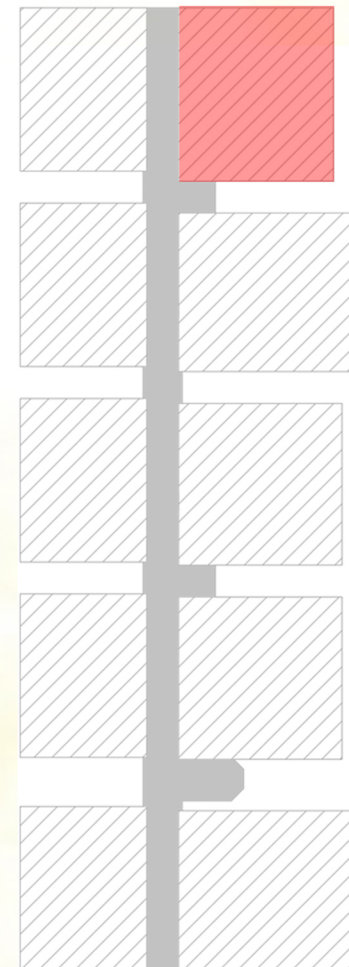


KEY PLAN

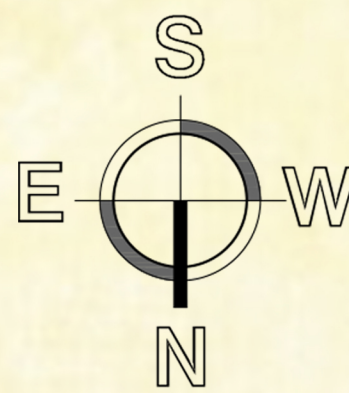
FLAT NO: 1-5 | 2 BHK | AREA- 1,141 Sqft



TYPICAL FLOOR PLAN

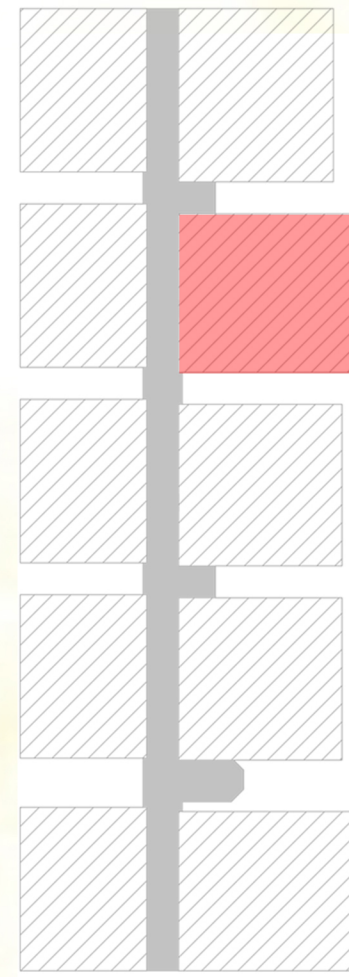


KEY PLAN



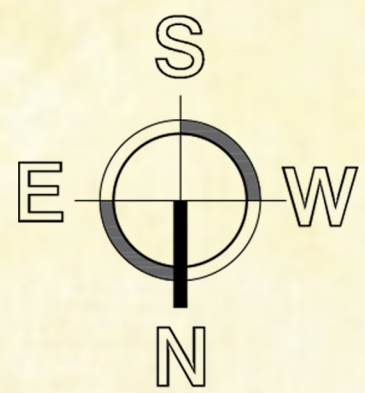
FLAT NO: 6 | 3 BHK | AREA- 1,434 Sqft

TYPICAL FLOOR PLAN

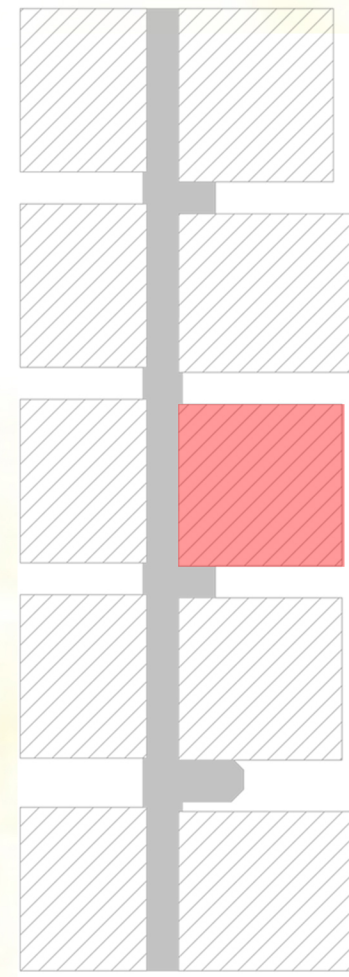


KEY PLAN

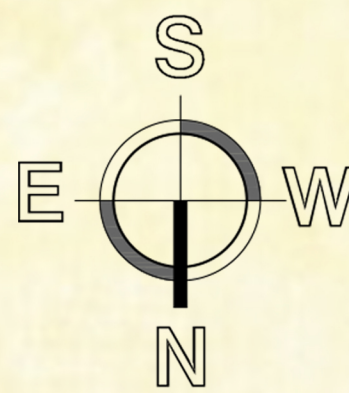
FLAT NO: 7 | 3 BHK | AREA- 1,569 Sqft



TYPICAL FLOOR PLAN

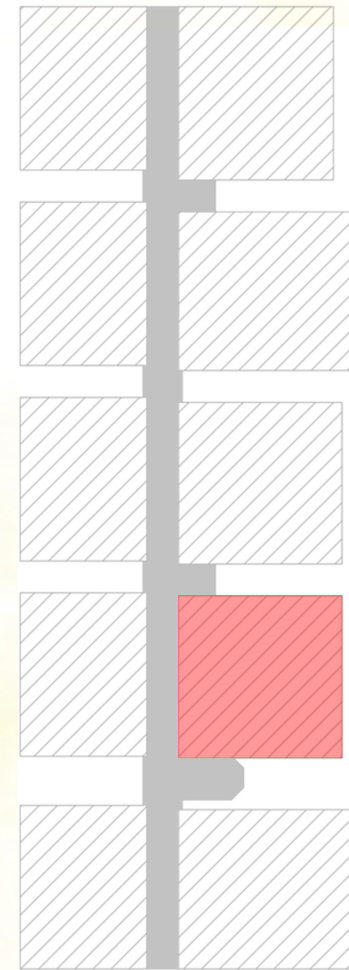


KEY PLAN



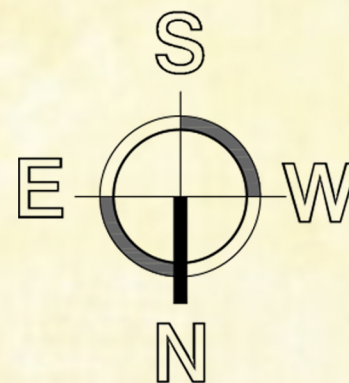
FLAT NO: 8 | 3 BHK | AREA- 1,457 Sqft

TYPICAL FLOOR PLAN

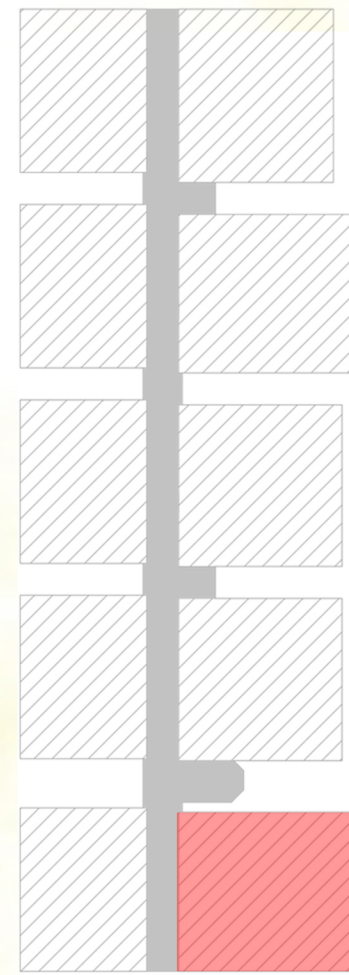


KEY PLAN

FLAT NO: 9 | 3 BHK | AREA- 1,462 Sqft

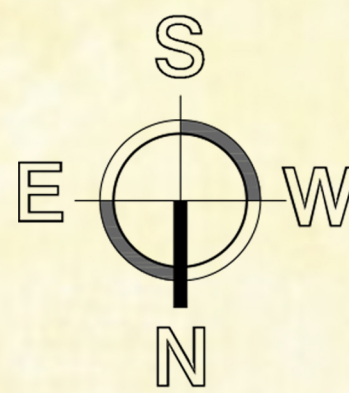


TYPICAL FLOOR PLAN



KEY PLAN

FLAT NO: 10 | 3 BHK | AREA- 1,597 Sqft





ELEVATION



AMENITIES

- Themed Apartment
- 100% Vastu Compliant
- CCTV Surveillance
- Secured access with boom barrier
- Gymnasium
- Swimming pool
- Spa Room
- Indoor Games

- Yoga Room
- Outdoor Designer Bar
- Jogging Track
- Children Play Area
- Designer Landscape
- Air Conditioned Visitor Lobby
- Reception Area
- Shindler Lifts
- Covered Party Area

- Intercom Facility
- Security Cubical
- Rain Water Harvest
- Generator Backup
- Security Cubical
- High Quality Finish
- Premium Quality Flooring
- High end Sanitary Fixtures
- High end Plumbing Fixtures

